

# NEBRASKA OES NEWS

## “Faith in Unity”

Volume IX Number X ~March, 2009



### TRAVELING WITH THE HERD

~~~~~  
WE DID IT!! The whole herd working together in faith and unity—WE HAVE DONE IT!

Do you remember that the Worthy Grand Matron said at the beginning of her year that she wanted to raise \$15,000 to be able to grant at least 5 wishes to children with life-threatening illnesses? I thought she was nuts! Well, the Grand Secretary told me that we did it! Already, with several months to go we have reached the goal. Congratulations Nebraska Eastern Star Members—it is fun to work together and make a difference in the world.

Just a warning for you—I have heard that there are some other animals around. I heard someone say “In like a Lion—out like a Lamb”, so be cautious and protect the herd!

Pansy

## MAKE A WISH

I want to remind all of you that I am still selling crafts donated by myself and many others who have contributed. I plan to be at the Adah Chapter Pasta Dinner 3/8, AkSarBen Chapter Pancake Breakfast 3/15, Temple Chapter's Sandwich Lunch 3/21 and the Job's Bethel No. 18 Pancake Breakfast on 3/29. I have hundreds of items available. Thanks to everyone for helping us reach our \$15,000 goal!

Margaret



**Transportation Chairman, Brother Dennis Newman, is looking for Van Drivers**

**for the 2009 Session. This is a great way to enjoy your Grand Chapter experience. If you can help, even for just a short time, Call Brother Dennis and let him know what days and times you can participate. 402-933-4850**



### SILENT AUCTION

There will be a Silent Auction held during the “Faith in Unity” Grand Chapter Session. The Worthy Grand Matron is asking Chapters and Individuals to bring a theme basket or other item to be put on the Silent Auction. Proceeds will be given to the “Make-a-Wish” Foundation of Nebraska, the special project of the Worthy Grand Matron and Worthy Grand Patron this year. Bring an item and join in the fun!

### QUACK! QUACK!

Calling all Grand Ducks, past, present and future! Don't forget the Grand Duck Luncheon at Old Chicago (across the street from the north entrance of the Holiday Inn Downtown) on Monday, May 11<sup>th</sup> at 12 noon, preceeding our Grand Chapter Session. Sister Dot Mattern (would she be “Worthy Grand Duck 09-10”?) will be making reservations there so the group can be seated together (order off the menu). Please call her if you plan to attend. (402) 455-0472. Grand Duck practice for Installation is at Pershing Center immediately following the afternoon session on Thursday May 14.

[ Note: if you have not witnessed the supurb job that the Grand Ducks do each year in placing and removing chairs for the Ceremony of Installation you should come to Grand Chapter just to see them!]



### To Past and Present Secretaries and Treasurers:

Grand Chapter is coming. Did you know that there is a luncheon just for Secretaries and Treasurers? It is the Rose Association Luncheon on Wednesday, May 13<sup>th</sup>. The luncheon is open to all past and present Secretaries and Treasurers. The food is delicious—and it's fun to get to know your counterparts from across the state. Sign up on your pre-registration form.

Nancy Haack, President, Rose Association

# VISIONQUEST

BY MIKE DONHAM  
Visionquest Committee  
of the General Grand  
Chapter  
Past Grand Patron of Nebraska

I decided that I needed to cover the topic of leadership again this month since leadership is so important to all organizations and especially ours - O.E.S.

The following is an example of leadership and team building: In the NFL when it comes to parity no other professional sport is as equal as pro football. So what sets one gifted team apart from another gifted team -- in a word Leadership. All other things being equal, the team with the best leaders will always win, regardless of whether the team is made up of professional football players, military personnel, business people or Eastern Star members.

Building an outstanding O.E.S. team means gathering members who are committed to the same goals for success.

A good leader empowers the members with the motivation that each of them needs to share in the successes and set backs of the Chapter, with constant reminders that each of them are important cogs on the O.E.S. team.

A Worthy Matron's investment is her team. How the team performs during initiation, stated meetings, fundraisers and other activities is a reflection of her leadership abilities. She generally has one year to prove that she and her O.E.S. team are winners. Working together is what a team is all about. Let's all strive to be winners!

E. I. Honey S. J.  
(Until we meet again)

### *A thank you from Mary*

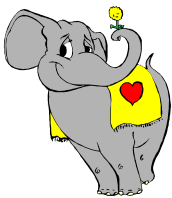
Mary Stapp, Executive Director of The Nebraska Masonic Home extends her thanks to all Eastern Star members in Nebraska for their support of the home.

## Enclosed with this OES News-----

- 1) An invitation to all 2008 and 2009 Electas who will be honored at the 134<sup>th</sup> Grand Chapter Session. Secretaries and Worthy Matrons, please give this invitation to your Electas for 2008 and 2009.
- 2) An invitation to the South Dakota/Nebraska Exchange. Please make this available to anyone in your Chapter who may wish to attend. Note deadlines of April 10<sup>th</sup> and 18<sup>th</sup> for lodging and meals.
- 3) Pre-registration forms for the "Faith in Unity" Grand Chapter Session. They may be copied, downloaded from our web-site (<http://neoes.org>) or you may call the Grand Chapter office to have additional copies mailed out to you.
- 4) Your 2009 Officers and Supplies Book, a listing of the WM, WP and Secretary of all Nebraska Chapters and other useful contact information. Please check your Chapter's listing and notify the Grand Chapter office of any corrections that may be necessary.

## For your Information -----

- ❖ The Grand Chapter Office now has a supply of the five colored ribbon (like that used on many of our officer badges). It is 1½ inches wide. Many of you had asked for it and we now have found a supply.
- ❖ Secretaries: we are nearly finished reviewing your Annual Reports. Your copies will be returned to you soon. At the same time we will be sending out your Chapter's Credentials for Grand Chapter. Please be sure your WM, WP, AM, AP receive these credentials and if they can not attend the Grand Chapter Session be sure they sign the proxy giving their vote to someone who will be attending from your Chapter. Remember all Chapters are required to register credentials at the Grand Chapter Session each year.
- ❖ Chapter Secretaries have received an important letter from the Board of Grand Trustees which should be read at the next stated meeting after it was received. If you have not read it to your members, please do so.



**FOR THE GOOD OF THE HERD**-----Hooray for the Herd! Our Grand Chapter year is soon coming to a close. As we review our work for the year, it indicates that we have had many great successes. We can't let down now, however, as there are many deadlines to meet before our 2008-2009 Grand Chapter year comes to a close.

FOR THE GOOD OF THE HERD, help the committees involved by remembering these important deadlines:

March 1—Deadline for ESTARL Applications  
March 15—Housing form for General Grand Chapter due  
April 1—Deadline for registration for General Grand Chapter Trip  
April 10—Deadline for reservations for SD/NE exchange  
April 25—Deadline for pre-registration for Grand Chapter  
April 30—Deadline for Educational Loan Applications  
May 1—Deadline for Notification of Scholarship Awards Form

KEEP UP WITH THE HERD --- OES MONTHLY CALENDAR

**PLEASE SEND IN INFORMATION TO BE INCLUDED IN THE MARCH OES NEWS BY March 15, 2009**

- March 8, 2009 ..... Adah Chapter No. 52, Pasta Dinner. Call Wendy at 402-291-8603 for information. 84<sup>th</sup> & Centennial, Papillion NE.
- March 15, 2009 ..... Pancake Breakfast and Bake Sale sponsored by AkSarBen Chapter No. 277, 2823 N. 83<sup>rd</sup> Street, Omaha. \$6.50 for adults. Call Jackie at 402-884-0571 for information.
- March 21 ..... Temple Chapter No. 271 Roast Beef Sandwich Lunch. Call Mary Louise at 402-435-8328 for information. 332 S. Centennial Mall, Lincoln.
- March 26, 2009 ..... Narcissus Chapter Red Hat Card Party. Call Karen at 402-455-5183 for information. 5903 Maple Street, Omaha.
- April 24, 25, 2009 ..... South Dakota/Nebraska exchange, Winner South Dakota and Valentine Nebraska.

# YOU ARE CORDIALLY INVITED TO ATTEND 2009 Nebraska - South Dakota Exchange



## WINNER, SOUTH DAKOTA

Friday, April 24, 2009

Hosted by Roseland Chapter No. 113

Winner Masonic Hall, Hwy 18, 1 block south of Court House



### Friday

- 2:30-4:30 P.M.** Nebraska Grand Officers Practice at Masonic Hall
- 4:30 P.M.** Nebraska Grand Officers and Roseland Chapter Officers practice exchange of officers
- 5:00 P.M.** Arrival of South Dakota Grand Officers
- 5:30 P.M.** **Banquet**—Winner Masonic Hall. Cost is \$8.00 each. (Make check payable to Marlene Frantz) Money must be sent with reservations to: Marlene Frantz W.M. 31678 Memory Lane, Winner SD 57580. Deadline for reservations is April 10, 2009.
- 7:00 P.M.** **Meeting** at Winner Masonic Hall opened by members of Roseland Chapter with **Ceremony of Initiation given by Nebraska Grand Officers.**
- Lodging:** **Holiday Inn Express**, 1360 E Hwy 44, Winner, SD (605-842-2255) You must make your own reservations. Please mention that you are with the OES group. Cut off date for reservations is April 10, 2009. \$79.00 + tax, includes full hot breakfast. Other hotels available: Warrior Inn: 605-842-3121; Buffalo Trail: 605-842-2212

**Contact Person:** Marlene Frantz, WM 605-842-1522  
jmftz@goldenwest.net



## VALENTINE, NEBRASKA

Saturday, April 25, 2009

Hosted by Minnehaha Chapter No. 246

Valentine Masonic Hall, 3<sup>rd</sup> and Hall Street, Valentine



### Saturday

- 9:00-11:00 A.M.** South Dakota Grand Officers Practice at Masonic Hall
- 11:00 A.M.** South Dakota Grand Officers and Minnehaha Chapter Officers practice exchange of officers
- 11:30 A.M.** Arrival of Nebraska Grand Officers.
- 12 Noon** **Lunch**—Valentine Masonic Hall. Cost is \$8.00 each. (Make check payable to Carol Luther) Money must be sent with reservations to: Carol Luther Secretary, PO Box 148, Kilgore NE 69216. Deadline for Reservations is April 18, 2009.
- 1:30 P.M.** **Meeting** at Valentine Masonic Hall opened by officers of Minnehaha Chapter with **Ceremony of Initiation given by South Dakota Grand Officers.**
- Lodging:** No rooms are being held.  
Hotels Available: Holiday Inn Express, 803 HWY 20, Valentine, Nebraska (402-376-3000); Comfort Inn, 101 Main Street (402-376-3300)

**Contact Person:** Carol Luther, PGM, Secretary 402-966-2851  
lutherbillcarol@gpcom.net

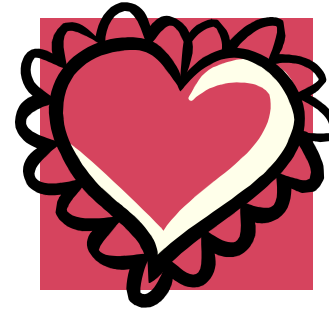


Tripp County Court House

## **Winner South Dakota**

Welcome to Winner! Located in south central South Dakota along Highways 18, 183 and 44, Winner is the county seat of Tripp County. With a population of 3,137, the city covers approximately 922.5 acres and is 1,920 ft. above sea level. Winner was part of the famous Louisiana Purchase of 1803 and later part of the Dakota Territory. Winner was so named because it was the "winner" in the struggle to establish a town along the railroad right-of-way when the Chicago North Western began moving west from Dallas, SD in 1909.

Winner is a good place to do business having the best utility rates in the state. Over 300 businesses are active in the Winner community. The Winner School district is rated level 1 by the South Dakota Division of Education. Winner is home to a Regional Healthcare Center and two modern assisted living centers. Recent capital improvements in the city include a new main street, a new 4,500 ft. concrete runway at the airport, and a new Fire Hall / Ambulance building facility with training room.



## **Valentine Nebraska Heart City**

A Place unlike anything you've seen. We are located in north central Nebraska and are the center of a diverse region of quiet lakes, grassy sand hills, secluded waterfalls, a national forest, two national wildlife refuges, big ranches with real cowboys, and one of the ten best canoeing rivers in the United States. We also have more than 200,000 acres of public land with some of the best hunting and fishing you'll find anywhere.

With 2,820 residents, Valentine is the metropolis of Cherry County. Though larger than Connecticut, our county is home to only about 6,000 people. Traditionally, "frontier" was defined as a place with fewer than six people per square mile, but Cherry County isn't nearly that crowded. Even with all those folks living in Valentine, we still average only one person per square mile. So, there is plenty of room for visitors. We have numerous lodging options, including guest ranches that offer horseback riding and fishing.